




Certificate of Analysis SALSA® Binning DNA SD052

Catalogue #	SD052	
Product name	SALSA® Binning DNA SD052	
LOT	S01-1018	
	6 reactions.	
Shipping conditions	Dry ice or cooling elements.	
	Store upon arrival between -25 °C and -15 °C.	
	Expiration date: October 2023, when stored at recommended conditions.	
Use	To be used with SALSA MLPA P003-D1 probemix (MLH1/MSH2) and SALSA MLPA reagent kits as described in the MLPA General Protocol and the corresponding probemix product description.	
Quality Test 1	The mutation-specific probes, as described in the product description, produce a signal at the designed length.	PASS
Quality Test 2	The signal of the mutation-specific probes when tested with wild-type genomic DNA is <5% of the peak height generated when tested with SD052 SALSA Binning DNA.	PASS
Quality Test 3	The signal of the mutation-specific probes when tested with SD052 SALSA Binning DNA is at least 10% in peak height of the average probe signal of the 10 neighbouring probes.	PASS
Quality Test 4	The 105 nt chromosome Y specific control probe should generate a signal on SD052 SALSA Binning DNA which is similar (+/-20%) to the signal obtained on wild-type male genomic DNA.	PASS
Quality Test 5	All SALSA MLPA probemix P003-D1 (MLH1/MSH2) probes, other than the mutation-specific probes, show normal signals, similar (+/-20%) to the peak pattern obtained on wild-type genomic DNA.	PASS

**EUROPE*: FOR IN VITRO DIAGNOSTIC (IVD) USE. THIS PRODUCT IS CE MARKED.
OUTSIDE EUROPE: FOR RESEARCH USE ONLY (RUO).**

*comprising EU member states, EU member states candidates, and members of the European Free Trade Association (EFTA). The product is for RUO in all other countries within Europe.

Based on the concentrations present, none of the ingredients are hazardous as defined by the Hazard Communication Standard. **A Safety Data Sheet (SDS) is not required for these products:** none of the preparations contain dangerous substances (as per Regulation (EC) No 1272/2008 [EU-GHS/CLP] and amendments) at concentrations requiring distribution of an SDS (as per Regulation (EC) No 1272/2008 [EU-GHS/CLP] and 1907/2006 [REACH] and amendments). If spills occur, clean with water and follow appropriate site procedures.

More information: www.mlp.com; www.mlp.eu

	MRC-Holland bv; Willem Schoutenstraat 1 1057 DL, Amsterdam, The Netherlands
E-mail	info@mlp.com (information & technical questions); order@mlp.com (orders)
Phone	+31 888 657 200

Certificate of Analysis

SALSA® Binning DNA SD052 sample pictures

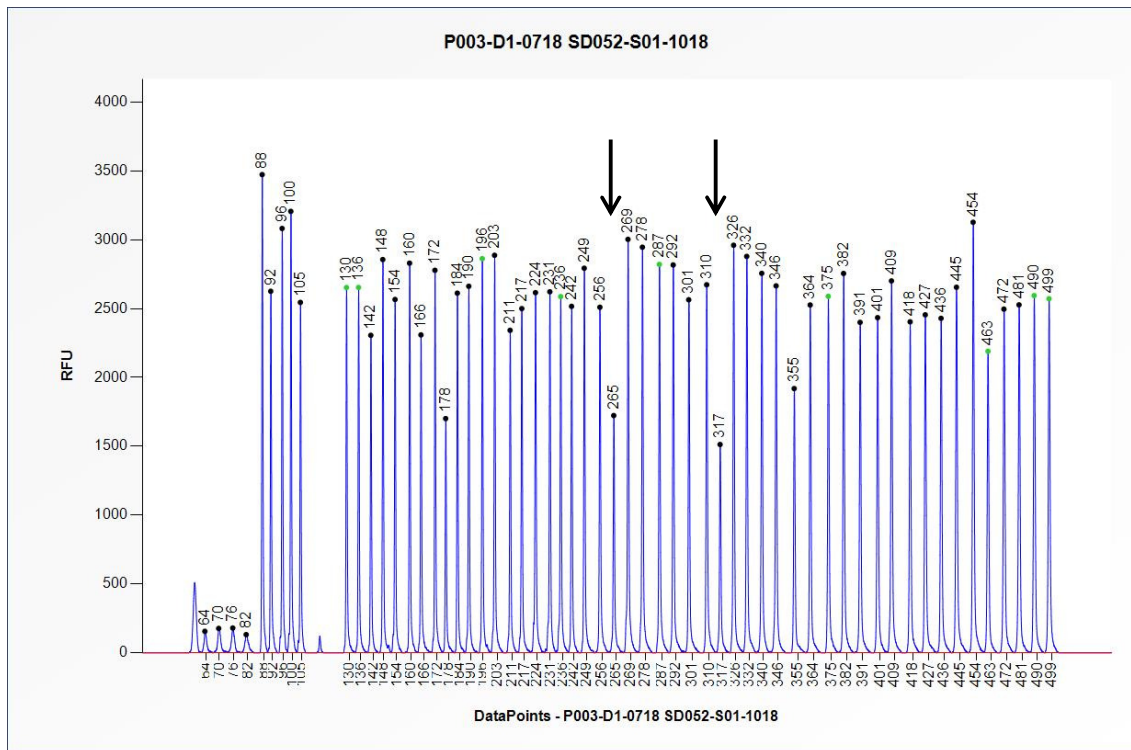


Figure 1. Capillary electrophoresis pattern from SD052-S01-1018 SALSA Binning DNA (approximately 50 ng) analysed with SALSA MLPA probemix P003 MLH1/MSH2 (D1-0718). The location of the mutation-specific probes at 265 and 317 nt are indicated. Probe peak heights may vary between probemix version D1 lots.

Certificate of Analysis

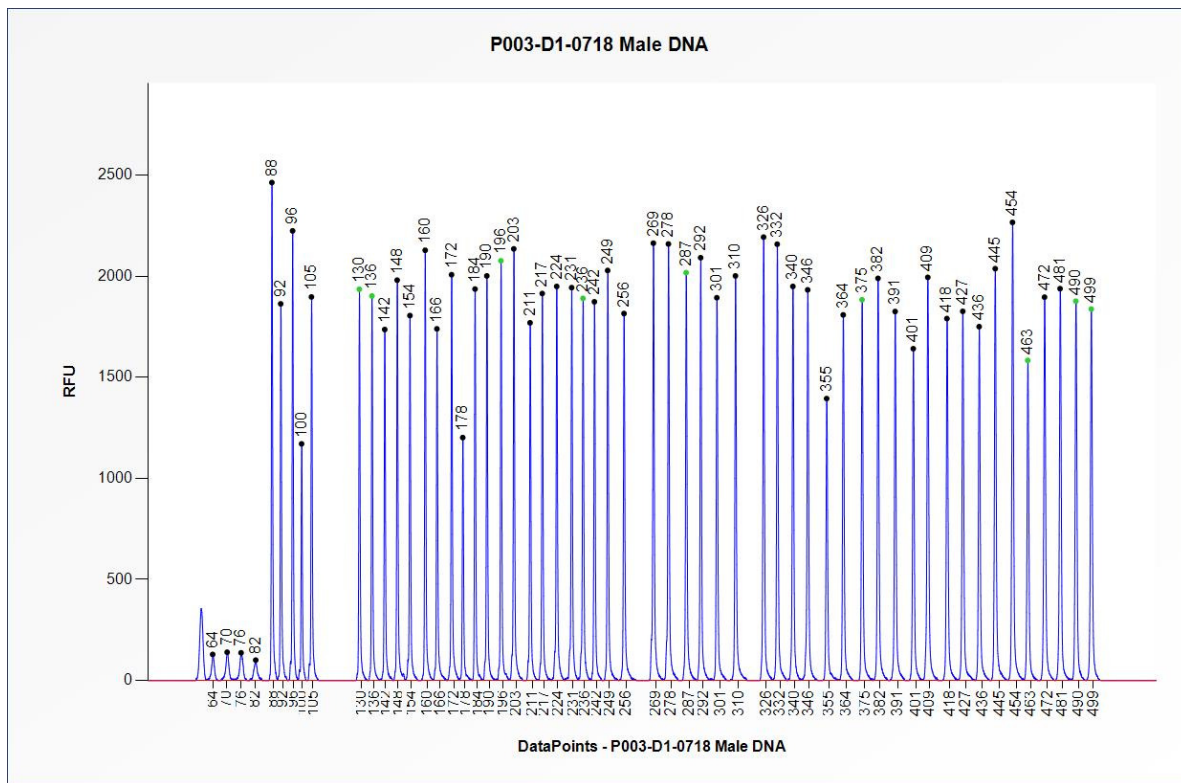


Figure 2. Capillary electrophoresis pattern from a sample of approximately 50 ng human male wild-type genomic DNA analysed with SALSA MLPA probemix P003 MLH1/MSH2 (D1-0718). Probe peak heights may vary between probemix version D1 lots.

This lot was certified by MRC-Holland on 02 November 2018.

This certificate is a declaration of analysis at the time of the manufacturing process. All assays were run in compliance with manufacturer's instructions for use.

Implemented changes in the COA

Version 01- 30 November 2018 (03)

- Not applicable, new document.