




Certificate of Analysis

SALSA® MS-MLPA® Probemix ME011 MMR

Catalogue #	ME011-25R, ME011-50R, ME011-100R	
Product name	Probemix ME011 MMR	
LOT	C1-0518	
	25, 50, or 100 reactions.	
Shipping conditions	Dry ice or cooling elements.	
	Store upon arrival between -25 °C and -15 °C.	
	Expiration date: May 2023, when stored at recommended conditions. This product should not be frozen/thawed more than 25 times.	
Use	To detect methylation status of promoter region in one or more sequences of the <i>MLH1</i> , <i>MSH2</i> , <i>PMS2</i> and <i>MSH6</i> genes, and the presence of the <i>BRAF</i> p.Val600Glu point mutation. This probemix can also be used to detect deletions/duplications in the promoter regions of the aforementioned genes and the <i>EPCAM</i> 3' region. This probemix is designed for use only in combination with SALSA MLPA reagent kits as described in the MS-MLPA General Protocol.	
Quality Test 1	Sufficient distance between peaks, absence of extra or shoulder peaks, completeness of hybridisation of each individual probe and HhaI digestion, as tested on Applied Biosystems 3130 and Beckman GeXP sequencers.	PASS
Quality Test 2	Standard deviation of each individual probe is <0.10, when tested on 23 different DNA samples of healthy individuals, extracted by various methods.	PASS
Quality Test 3	Standard deviation of each individual probe, tested on a single DNA sample under various experimental conditions, meeting reaction-specific criteria. Conditions tested include: pipetting errors; deviating thermocycler temperatures; diluted HhaI; presence of salts (affecting DNA sample denaturation) or presence of impurities in the DNA sample.	PASS
Quality Test 4	No DNA controls resulted in only five major peaks shorter than 121 nucleotides (nt): Four Q fragments at 64, 70, 76 and 82 nt, and one 19 nt peak corresponding to the unused portion of the fluorescent PCR primer. Non-specific peaks longer than 121 nt AND with a height >25% of the median of the four Q fragments were not observed. Note: peaks below this 25% threshold are not expected to affect MLPA reactions when sufficient (50-250 ng) sample DNA is used.	PASS

FOR RESEARCH USE ONLY. FOR IN VITRO USE ONLY.

None of the ingredients are derived from humans, animals, or pathogenic bacteria. Based on the concentrations present, none of the ingredients are hazardous as defined by the Hazard Communication Standard. **A Safety Data Sheet (SDS) is not required for these products:** none of the preparations contain dangerous substances (as per Regulation (EC) No 1272/2008 [EU-GHS/CLP] and amendments) at concentrations requiring distribution of an SDS (as per Regulation (EC) No 1272/2008 [EU-GHS/CLP] and 1907/2006 [REACH] and amendments). If spills occur, clean with water and follow appropriate site procedures.

More information: www.mlpa.com; www.mlpa.eu

	MRC-Holland bv; Willem Schoutenstraat 1 1057 DL, Amsterdam, The Netherlands
E-mail	info@mlpa.com (information & technical questions); order@mlpa.com (orders)
Phone	+31 888 657 200

Certificate of Analysis **SALSA MS-MLPA probemix ME011-C1 MMR sample pictures**

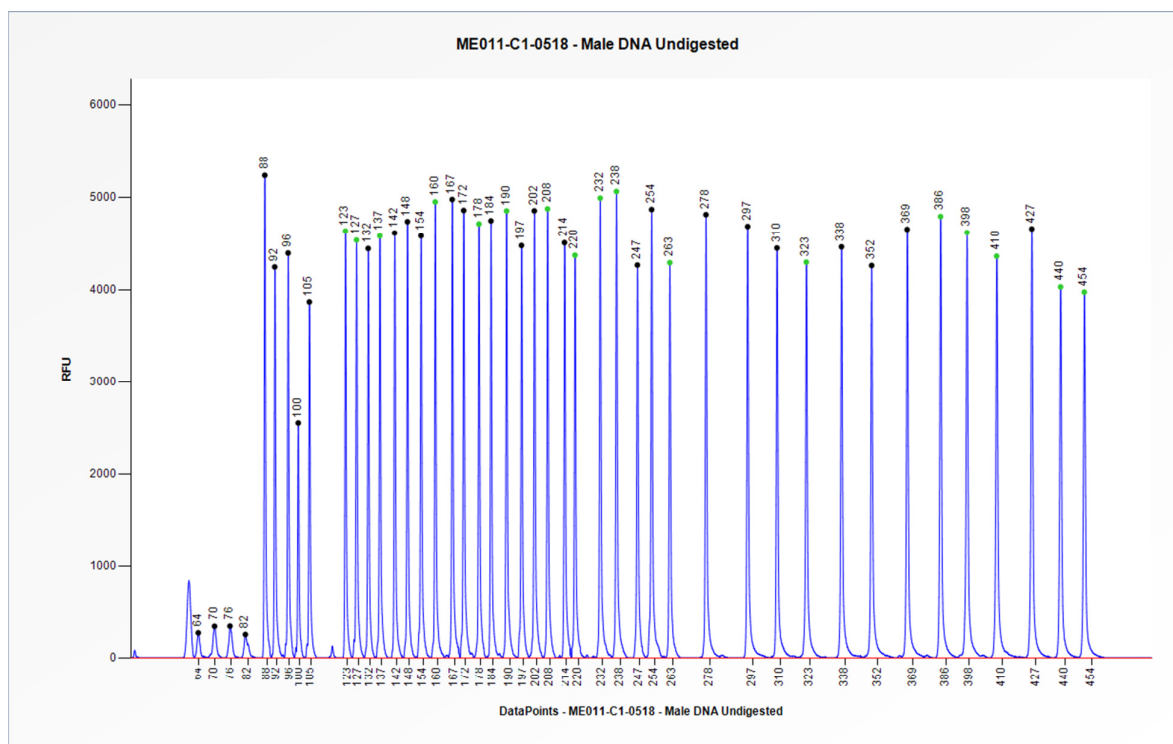


Figure 1. Capillary electrophoresis pattern of a sample of approximately 50 ng undigested human male control DNA analysed with SALSA MS-MLPA Probemix ME011-C1 MMR (C1-0518) for the quantification of copy numbers.

Certificate of Analysis

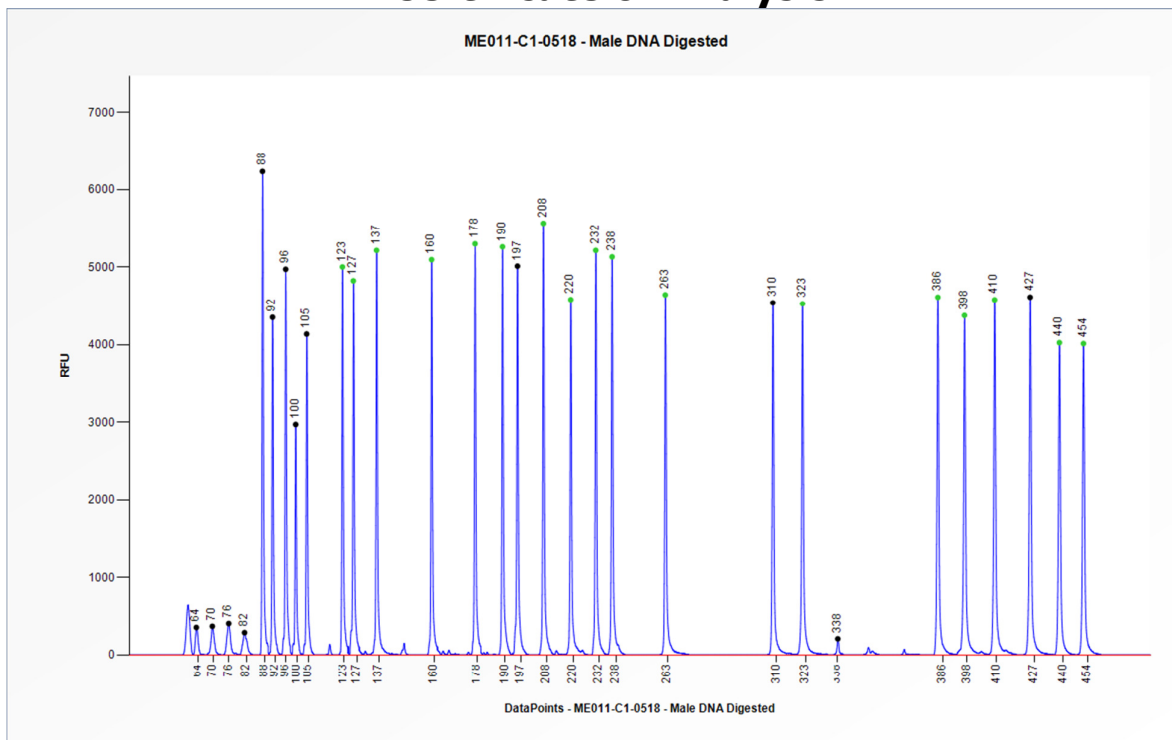


Figure 2. Capillary electrophoresis pattern of a sample of approximately 50 ng digested human male control DNA analysed with SALSA MS-MLPA Probemix ME011-C1 MMR (C1-0518) to determine the methylation status.

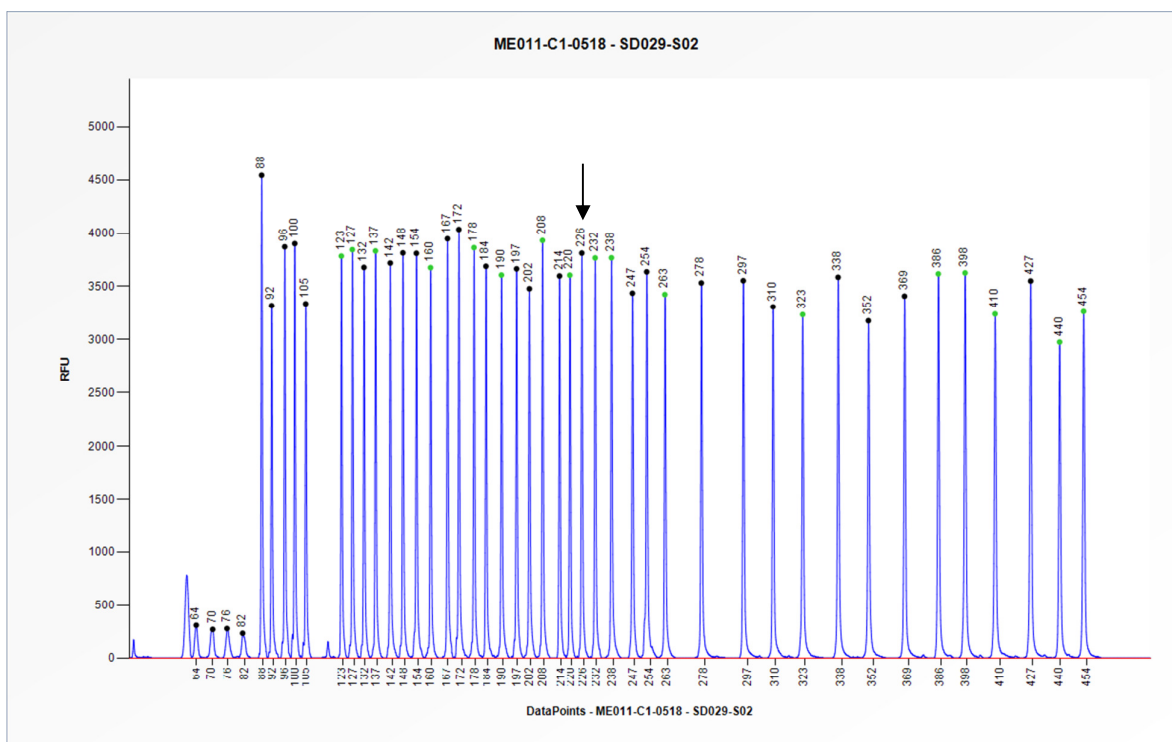


Figure 3. Capillary electrophoresis pattern of SALSA Binning DNA SD029 (approximately 50 ng) analysed with SALSA MS-MLPA probemix ME011 MMR (C1-0518). The location of the BRAF p.Val600Glu specific probe at 226 nt is indicated.

Certificate of Analysis

This lot was certified by MRC-Holland on 10 September 2018.

This certificate is a declaration of analysis at the time of the manufacturing process. All assays were run in compliance with manufacturer's instructions for use.

Implemented changes in the COA
<i>Version 01- 10 September 2018 (03)</i> - Not applicable, new document.